

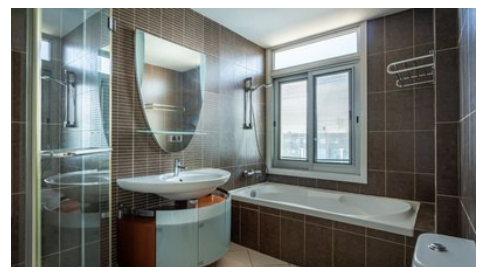
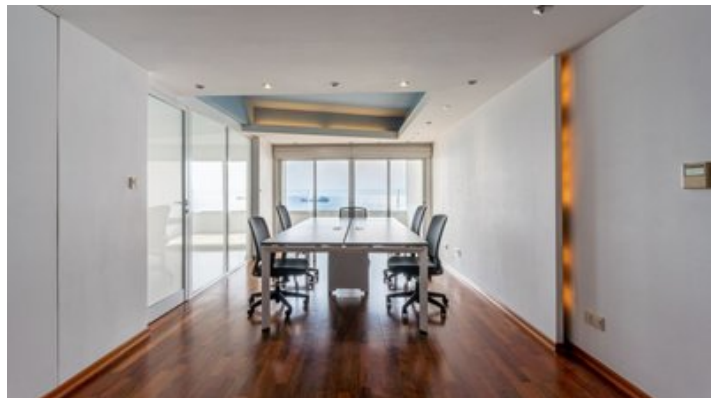
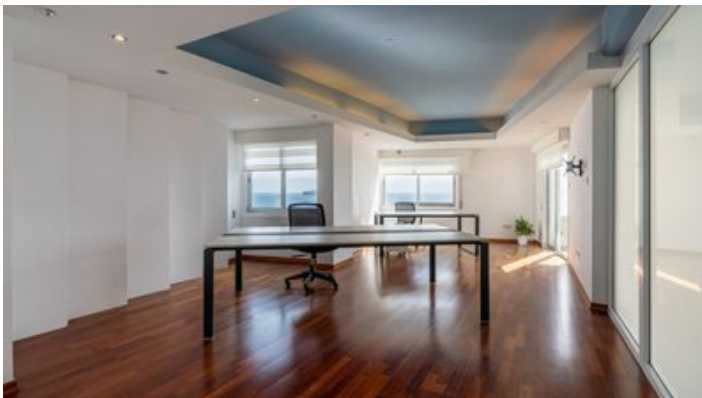
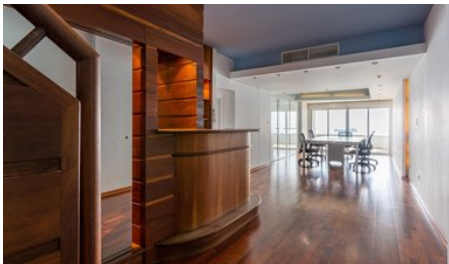


## Limassol 220m2 Sea Front Office Rent - Historical Centre

 Limassol, Lemesos

#1014





<b>Rent</b>	€4,500 /month	<b>Type</b>	Office
<b>Bathrooms</b>	2	<b>Covered</b>	220 m <sup>2</sup>
<b>Covered veranda</b>	20 m <sup>2</sup>	<b>Year of Construction</b>	2000
<b>Status</b>	Used	<b>Floor</b>	7 / 2
<b>Area</b>	Limassol, Lemesos		

## Description

ON BEHALF OF E.K EXECUTIVES ESTATE AGENTS LTD - RN:483 LN:237/E

This splendid office will give you good reason to want to go to work every day!

Situated in the heart of Limassol's Historical Centre with stunning sea views, Limassol Marina and the town centre, making it a perfect business location for any enterprise.

The office is 220m<sup>2</sup> laid out on two floors, the seventh and eighth. recently renovated to the highest standard with top quality items placing it proudly in the luxury league.

It has an open concept lounge, staffed reception, private offices seating from 3 to 10 people, fully equipped kitchen and two full bathrooms with showers.

A perfect choice to balance business and pleasure!



### Maria Lazoura - E.K Executives Estate Agents Ltd (RN 483-LN 237/E)

Sales & Rentals Executive

✉ info@cyprusrealestateportal.com

☎ (+357) 97888701

## Facilities

Aircondition, Split system  
Elevator

Parking, Covered  
Solar water heater

## Features

Heart of city center  
Closed offices  
Meeting room  
Excellent condition  
Main road  
Near public transport

Easy access to main roads  
Reception  
Kitchenette  
Parquet flooring  
Double glazing  
Luxury specifications

## Distances

**Amenities** 200 m  
**Sea** 200 m  
**Schools** 3 km

**Airport** 64 km  
**Public Transport** 200 m

## Floor plans

