

CYPRUS Real Estate PORTAL

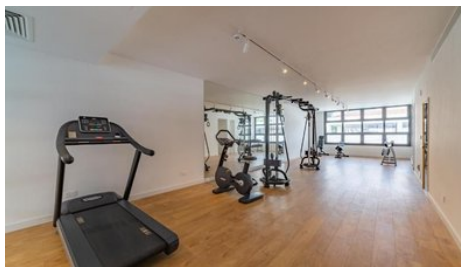
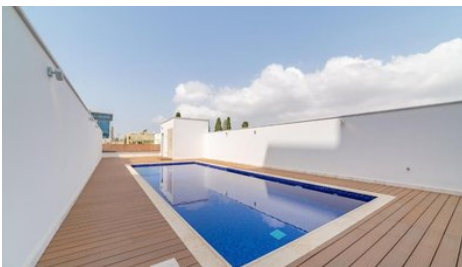


## Limassol 3BD Furnished Sea Front Apartment Rent - Molos Area

📍 Limassol, Lemesos

#1037





<b>Rent</b>	€4,000 /month	<b>Type</b>	Apartment
<b>Bedrooms</b>	3	<b>Bathrooms</b>	3
<b>Covered</b>	159 m <sup>2</sup>	<b>Covered veranda</b>	30 m <sup>2</sup>
<b>Year of Construction</b>	2018	<b>Status</b>	Key ready
<b>Energy efficiency rating</b>	A	<b>Floor</b>	1 / 1
<b>Area</b>	Limassol, Lemesos		

## Description

ON BEHALF OF E.K EXECUTIVES ESTATE AGENTS LTD - RN:483 LN:237/E

Sea front living amidst the buzzing business centre of Limassol at its best!

This three bedroom, all en-suite, deluxe fully furnished apartment is perfect for corporate accommodation or professionals.

Located in a new, modern building within walking distance to the sea, amenities and bus route with a common pool, gym and private covered parking.

The spacious areas enjoy uninterrupted sea views from the living area, the master bedroom and balcony. Fully furnished with Italian quality furniture and a fully equipped kitchen, fully automated with VRV air conditioning and underfloor heating.



**Maria Lazoura - E.K Executives Estate Agents Ltd (RN 483-LN 237/E)**  
Sales & Rentals Executive

✉ info@cyprusrealestateportal.com

☎ (+357) 97888701

## Facilities

Aircondition, Central system  
 Parking, Covered  
 Elevator  
 Storage  
 Solar water heater

Heating, Underfloor  
 Pool, Communal  
 Gym  
 Gated complex

## Features

Smart home  
 Shower  
 Easy access to main roads  
 Balcony  
 Entrance gate, automated  
 Bright  
 Alarm system  
 Guest WC  
 En suite Shower  
 Modern design  
 Sea front  
 Near bus route  
 Kitchen appliances

Bath  
 Heart of city center  
 Combined kitchen and dining area  
 Fitted wardrobes  
 Handicap Accessible  
 Walk-in closet  
 Double glazing  
 En suite Bathroom  
 Luxury specifications  
 Sea view  
 Walking distance to beach  
 Near amenities

## Distances

**Amenities** 100 m  
**Sea** 100 m  
**Resort** 5 km

**Airport** 65 km  
**Public Transport** 100 m