

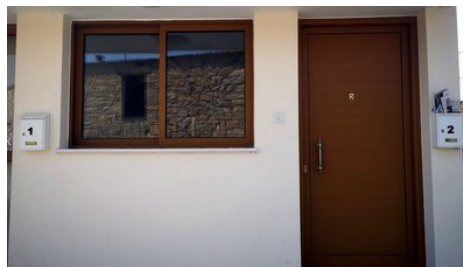
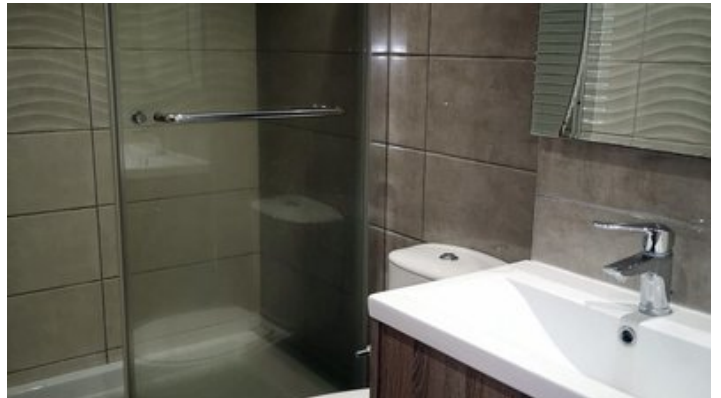
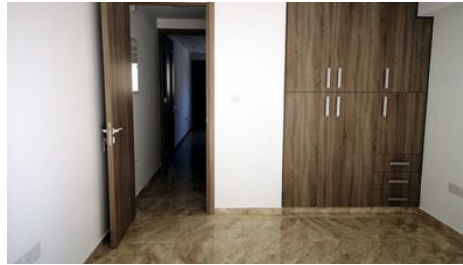


Limassol 1BD New Ground Floor Apartment Rent - Parekkklisia

📍 Limassol, Parekkklisia

#1039





Rent	€650 /month	Type	Apartment
Bedrooms	1	Bathrooms	1
Covered	60 m ²	Year of Construction	2019
Status	Key ready	Energy efficiency rating	A
Floor	Ground floor / 1	Area	Limassol, Parekklesia

Description

ON BEHALF OF E.K EXECUTIVES ESTATE AGENTS LTD - RN:483 LN:237/E

Located in the centre of Parekklesia village, makes this brand new one bedroom apartment an ideal cozy home within arm's reach of all amenities.

It comes fully equipped with brand new appliances, high end finishes, AC throughout and ample parking spaces. The apartment is part of a small three level building but has it's own private entrance and backyard.

*Two deposits and 1 month's rent in advance. Price is negotiable depending on payment terms.



Maria Lazoura - E.K Executives Estate Agents Ltd (RN 483-LN 237/E)
Sales & Rentals Executive

✉ info@cyprusrealestateportal.com

☎ (+357) 97888701

Facilities

Aircondition, Split system
Solar water heater

Parking, Uncovered

Features

Fitted wardrobes
Pressurized water system
Double glazing
Ground Floor Bedroom
Country view
Near amenities

Handicap Accessible
Open plan
Veranda, back
Modern design
Near bus route
Kitchen appliances

Distances

Amenities 200 m
Sea 5 km
Schools 300 m

Airport 65 km
Public Transport 500 m
Resort 3 km