

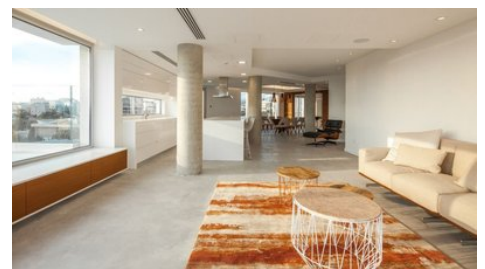
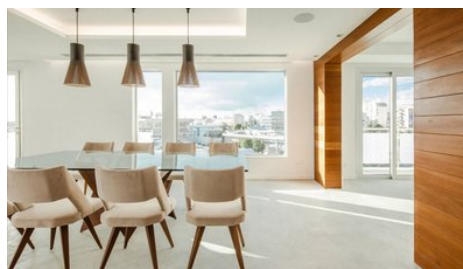
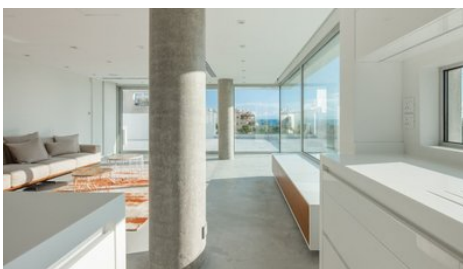
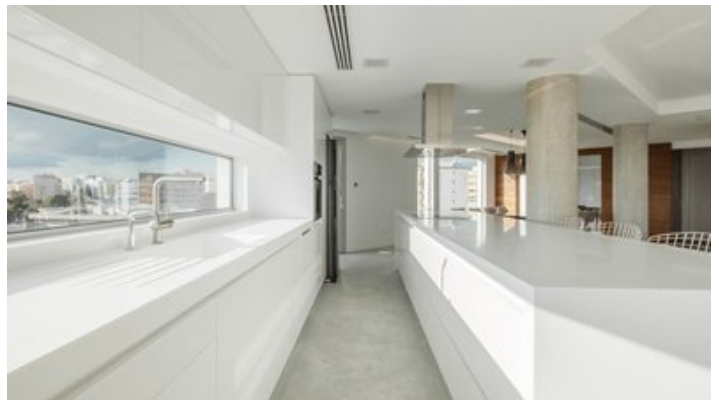
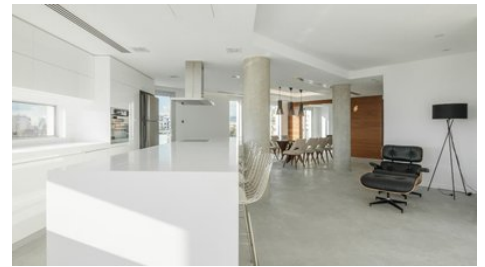


Limassol Unique 3BD Penthouse Rent - Town Centre

 Limassol, Lemesos

#1057





Rent	€5,500 /month	Type	Apartment
Bedrooms	3	Bathrooms	2
Covered	270 m ²	Status	Key ready
Energy efficiency rating	A	Floor	Penthouse / 1
Area	Limassol, Lemesos		

Description

ON BEHALF OF E.K EXECUTIVES ESTATE AGENTS LTD - RN:483 LN:237/E

This majestic, one-of-a kind penthouse is waiting to host a connoisseur of luxury and refined living! Located in a prime location in the town centre of Limassol, it offers panoramic 360 degree views of the town, the sea front and the Municipal Garden

Situated in one of the older but quality buildings with a floor area of 270sq meter fully renovated with quality finishes and high-end home automation, CCTV, alarm, safety door, audio and many private details of differentiators. A 3+1 bedroom apartment features minimal lines, open plan, inside out concept, yet in a very homely, inviting, and warm setup. An outside room can be used as storage space or staff room. A truly one-of-a kind masterpiece that brings the Mediterranean beach and Central Park views together. Viewing is highly recommended to appreciate this wonderful property!



Maria Lazoura - E.K Executives Estate Agents Ltd (RN 483-LN 237/E)
Sales & Rentals Executive

✉ info@cypusrealestateportal.com
☎ (+357) 97888701

Facilities

Aircondition, Central system	Heating, Central
Parking, Covered	Elevator
Storage	Solar water heater

Features

Smart home	Shower
Central TV system	Central satellite system
Central sound system	Heart of city center
Combined kitchen and dining area	Next to green area
Balcony	Fitted wardrobes
Handicap Accessible	Pressurized water system
City view	Open plan
Alarm system	Double glazing
Guest WC	En suite Shower
Luxury specifications	Modern design
Panoramic view	Sea view
Walking distance to beach	Near bus route
Near amenities	Roof Garden
Kitchen appliances	

Distances

Amenities	300 m	Airport	65 km
Sea	1 km	Public Transport	200 m