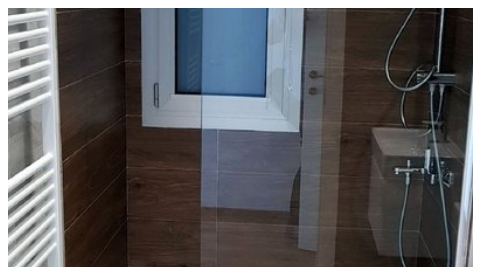
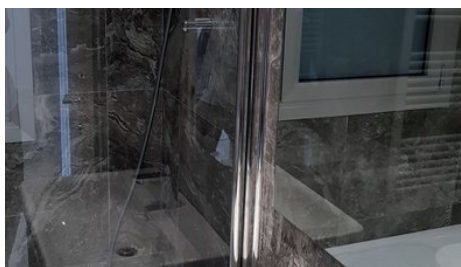
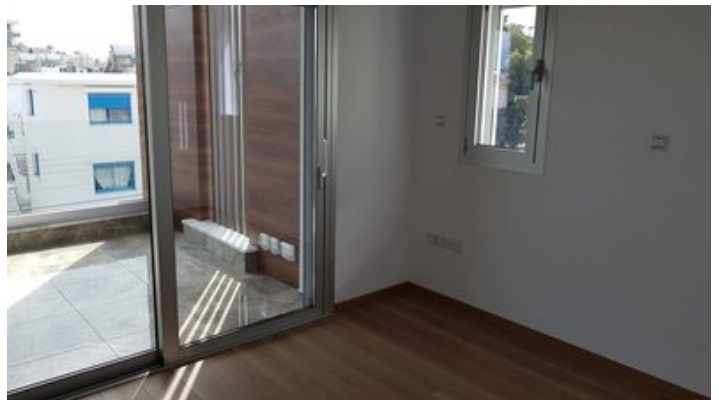


## Limassol Premium 3BD Penthouse with Private Pool Rent - Germasogeia Tourist Area

📍 Limassol, Germasogeia Tourist Area

#1111





<b>Rent</b>	€4,500 /month	<b>Type</b>	Apartment
<b>Bedrooms</b>	3	<b>Bathrooms</b>	2
<b>Covered</b>	117 m <sup>2</sup>	<b>Roof garden</b>	110 m <sup>2</sup>
<b>Covered veranda</b>	40 m <sup>2</sup>	<b>Year of Construction</b>	2019
<b>Status</b>	Key ready	<b>Energy efficiency rating</b>	A
<b>Area</b>	Limassol, Germasogeia Tourist Area		

## Description

ON BEHALF OF E.K EXECUTIVES ESTATE AGENTS LTD - RN:483 LN:237/E

This unique, premium class three bedroom penthouse with a private roof garden and pool is located in the prime residential area of Germasogeia and within walking distance to the sea front. Situated in a small, new and modern building, it hosts three generous bedrooms, en-suite shower, main bathroom, guest WC and spacious open plan kitchen/living/dining areas. Constructed to the highest degree with thermal insulation, double glazing, heating, VRV air conditioning, electric shutters, secure entrances, covered parking, store room and Bosch electrical appliances. A premium property! Will this be your new home? Call us today for a viewing!



### Maria Lazoura - E.K Executives Estate Agents Ltd (RN 483-LN 237/E)

Sales & Rentals Executive

✉ info@cyprusrealestateportal.com  
☎ (+357) 97888701

## Facilities

Aircondition, Central system	Heating, Central
Parking, Covered	Pool, Private
Elevator	Storage
Gated complex	Outdoor shower
Solar water heater	

## Features

Bath	Shower
Easy access to main roads	Easy access to highway
Combined kitchen and dining area	Balcony
Fitted wardrobes	Entrance gate, automated
Outdoor kitchen	Shutters, electric
Handicap Accessible	Pressurized water system
Bright	City view
Open plan	Double glazing
Guest WC	Quiet Area
Marble flooring	CCTV
En suite Shower	Luxury specifications
Modern design	Walking distance to beach
Near bus route	Near amenities
Kitchen appliances	

## Distances

<b>Amenities</b>	500 m	<b>Airport</b>	65 km
<b>Sea</b>	300 m	<b>Public Transport</b>	300 m