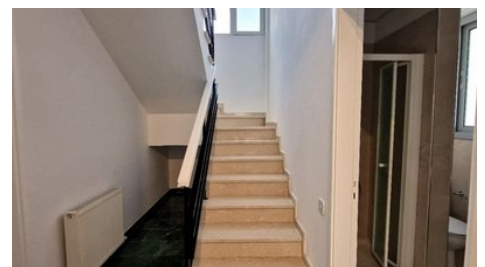
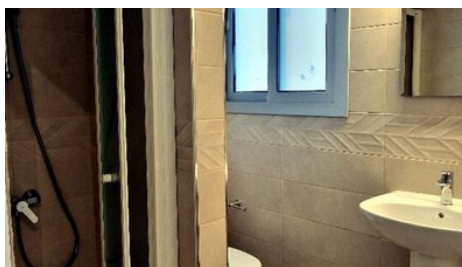


## Limassol 3BD Furnished Detached House Rent - Pyrgos

 Limassol, Pyrgos Lemesou

#1131





<b>Rent</b>	€3,250 /month	<b>Type</b>	Detached House
<b>Bedrooms</b>	3	<b>Bathrooms</b>	3
<b>Covered</b>	180 m <sup>2</sup>	<b>Plot</b>	550 m <sup>2</sup>
<b>Status</b>	Key ready	<b>Area</b>	Limassol, Pyrgos Lemesou

## Description

ON BEHALF OF E.K EXECUTIVES ESTATE AGENTS LTD - RN:483 LN:237/E

This contemporary and elegant newly renovated three bedroom detached house with a private pool is ready to welcome it's new tenants!

Located in the popular village of Pyrgos, it is close to the local amenities and within easy access to the highway and sea front are of blue flag beaches.

This lovely home hosts open plan living/dining/kitchen areas that open up to the garden and pool patio areas. The kitchen is fully equipped with brand new appliances, including a dishwasher, washing machine & dryer.

There is a ground floor bedroom and a guest shower/toilet room and the upper level hosts another two bedrooms, one of which has an en-suite shower and a main bathroom. The upper landing area and both bedrooms enjoy beautiful mountain views from spacious balconies.

Located in a peaceful family community, the house is surrounded by spacious patio areas, manicured garden with fruit trees and a lovely pool area.

The rental amount is inclusive of pool and garden maintenance.



### Maria Lazoura - E.K Executives Estate Agents Ltd (RN 483-LN 237/E)

Sales & Rentals Executive

✉ info@cyprusrealestateportal.com

☎ (+357) 97888701

## Facilities

Aircondition, Split system  
 Parking, Uncovered  
 Storage  
 Outdoor shower

Heating, Central, Independent  
 Pool, Private  
 Landscaped garden  
 Solar water heater

---

## Features

Bath  
 Bicycle parking  
 Easy access to highway  
 Spacious rooms  
 Balcony, back  
 Fitted wardrobes  
 Under stairs storage  
 Garden  
 Internal stairs  
 Irrigation system  
 Corner  
 Double glazing  
 Ground Floor Bedroom  
 Marble flooring  
 Luxury specifications  
 Country view  
 Indoor Fireplace

Shower  
 Easy access to main roads  
 Combined kitchen and dining area  
 Next to green area  
 Balcony, front  
 Courtyard  
 Handicap Accessible  
 Pressurized water system  
 Bright  
 Open plan  
 Mountain view  
 Guest WC  
 Quiet Area  
 En suite Shower  
 Modern design  
 Near amenities  
 Kitchen appliances

---

## Distances

**Amenities** 2 km  
**Sea** 5 km

**Airport** 65 km  
**Public Transport** 2 km