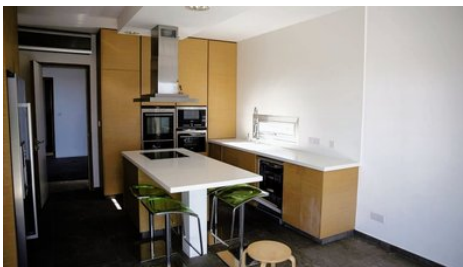


## Limassol 7BD Contemporary Prime Villa Sale - Panthea

 Limassol, Panthea

#1212





<b>Price</b>	€1,300,000	<b>Type</b>	Villa
<b>Bedrooms</b>	7	<b>Bathrooms</b>	5
<b>Covered</b>	360 m <sup>2</sup>	<b>Plot</b>	940 m <sup>2</sup>
<b>Year of Construction</b>	2010	<b>Title deed</b>	Yes
<b>Status</b>	Resale	<b>Energy efficiency rating</b>	B+
<b>Area</b>	Limassol, Panthea		

## Description

Majestically perched on the Panthea hills, this seven bedroom contemporary villa ticks all the boxes for anyone who appreciates modern architecture combined with versatile living spaces.

Immersed in a relaxing mountain view location, this tranquil home has amazing outdoor spaces with a mature garden, patio areas, roof garden and private pool.

Internally, it has three levels.

The ground level hosts a very spacious living/dining area, a separate kitchen, guestroom/office with a private bathroom and a guest toilet. Surrounded by patios and tall windows giving the feel of open and airy spaces.

A beautiful staircase takes you to the upper level that hosts a master bedroom with a walk-in closet and en-suite bathroom and an area that can be used as a roof garden. Another two bedrooms share a main bathroom and there is also a laundry room.

The lower level hosts another section with a living room, kitchen, another two bedrooms and a bathroom again leading onto a spacious patio area. There is also another bedroom with a bathroom, ideal for domestic help use.

Perfect for investment purposes as it already has a substantial rental income or for private use. Both options can be discussed.

Will this beautiful home be your new address?



**Maria Lazoura - E.K Executives Estate Agents Ltd (RN 483-LN 237/E)**  
Sales & Rentals Executive

✉ info@cyprusrealestateportal.com

☎ (+357) 97888701

## Facilities

Aircondition, Central system  
 Parking, Covered  
 Storage  
 Landscaped garden  
 Outdoor shower

Heating, Central, Independent  
 Pool, Private  
 Pergola  
 Maid's room  
 Solar water heater

## Features

Bath  
 Thermal insulation  
 Spacious rooms  
 Next to green area  
 Balcony, front  
 Entrance gate, automated  
 Garden  
 Internal stairs  
 Irrigation system  
 Kitchenette  
 Double glazing  
 Ground Floor Bedroom  
 CCTV  
 En suite Bathroom  
 Luxury specifications  
 Country view  
 Barbeque  
 Guestroom  
 Laundry room

Shower  
 Easy access to highway  
 Elevated  
 Balcony, back  
 Fitted wardrobes  
 Fly screens  
 Pressurized water system  
 Bright  
 Walk-in closet  
 Alarm system  
 Guest WC  
 Quiet Area  
 Rental Potential  
 En suite Shower  
 Modern design  
 Indoor Fireplace  
 Roof Garden  
 Office  
 Kitchen appliances

## Distances

**Amenities** 2 km  
**Sea** 12 km

**Airport** 65 km  
**Public Transport** 2 km